

June 2016  
Tech Write up - Version 2.35



# POWER PERFECT BOX

## Installation Instructions

(Single Phase)



Missoula, MT 59808  
1-866-99-SATIC  
[www.saticusa.com](http://www.saticusa.com)

powering tomorrow's change... today



# POWER PERFECT BOX

## Locations and Information:

- ◆ The Satic Power Perfect Box (PPBOX) is a fully synergistic power conditioner, designed to be installed at the load center (distribution/breaker panel).
- ◆ Some homes have multiple breaker panels and the PPBOX can be installed on any breaker panel providing there is space for the dedicated breaker.
- ◆ The PPBOX is designed to condition ALL phases of power in the home when installed at the Distribution Panel.
- ◆ If there are no spaces available in the breaker panel, a subpanel can be installed for a dedicated breaker.
- ◆ The PPBOX MUST be installed on a dedicated two-pole 15 amp breaker. Double-tapping / Piggybacking is against national building codes and may void the warranty.
- ◆ The PPBOX is enclosed in a NEMA 3X box allowing it to be installed indoors or outdoors, not to be installed under water.

### **WARNING:**

**ELECTRICAL SHOCK MAY OCCUR. HAVE YOUR SATIC PRODUCT INSTALLED BY A LICENSED ELECTRICIAN. INSTALLING ELECTRICAL EQUIPMENT CAN RESULT IN SHOCK, SERIOUS INJURY, AND EVEN DEATH.**

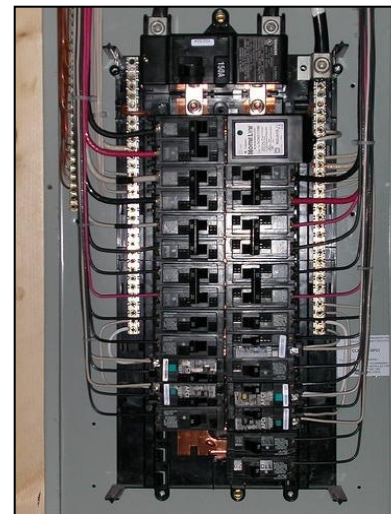
### **DO NOT OPEN:**

**THERE ARE NO SERVICEABLE PARTS. LICENSED ELECTRICIAN MAY OPEN TO CHECK BLUE LIGHT AND RECORD SERIAL NO.**

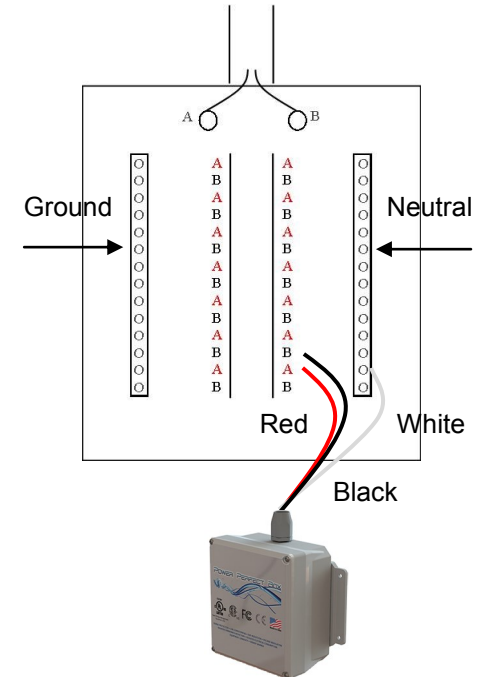


## Installation Instructions:

- ◆ Install a dedicated two-pole 15 amp breaker. Leave breaker in "OFF" position until installation is complete and power is restored to the panel.
- ◆ Mount box in a secure location with access to the breaker. Use the knock-outs on the panel to allow access to the breaker. Use UL approved conduit.
- ◆ Secure the two leads (red and black wires) placing one on each leg of the breaker. Secure the neutral (white wire) to the neutral bar in the panel.
- ◆ Reinstall the panel cover securely.
- ◆ Switch the breaker to "ON" ~ an interior blue light on PPBOX will be illuminated. If the light remains off, re-check the connections and call tech support at 1-866-99-SATIC.



*The Satic Power Perfect Box should be placed on a dedicated, 2-pole 15 amp breaker (not included).*



### **- Warranty -**

**The Satic Power Perfect Box has a warranty from date of installation. Please fill out the warranty card completely and return it after installation is complete.**